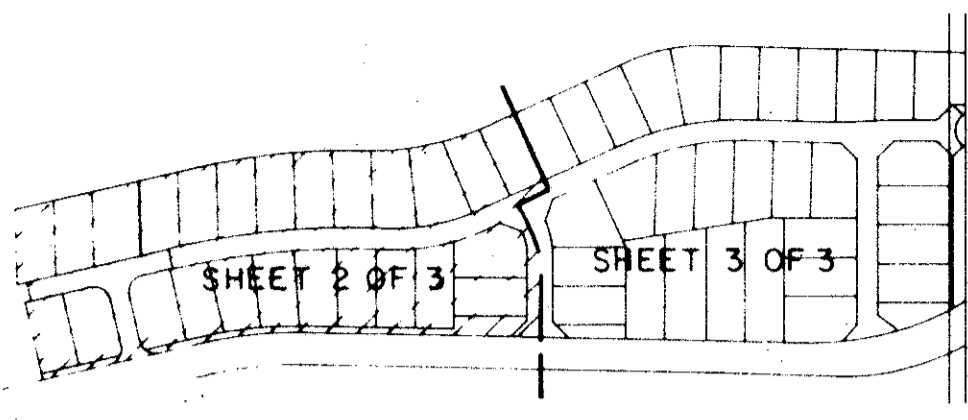


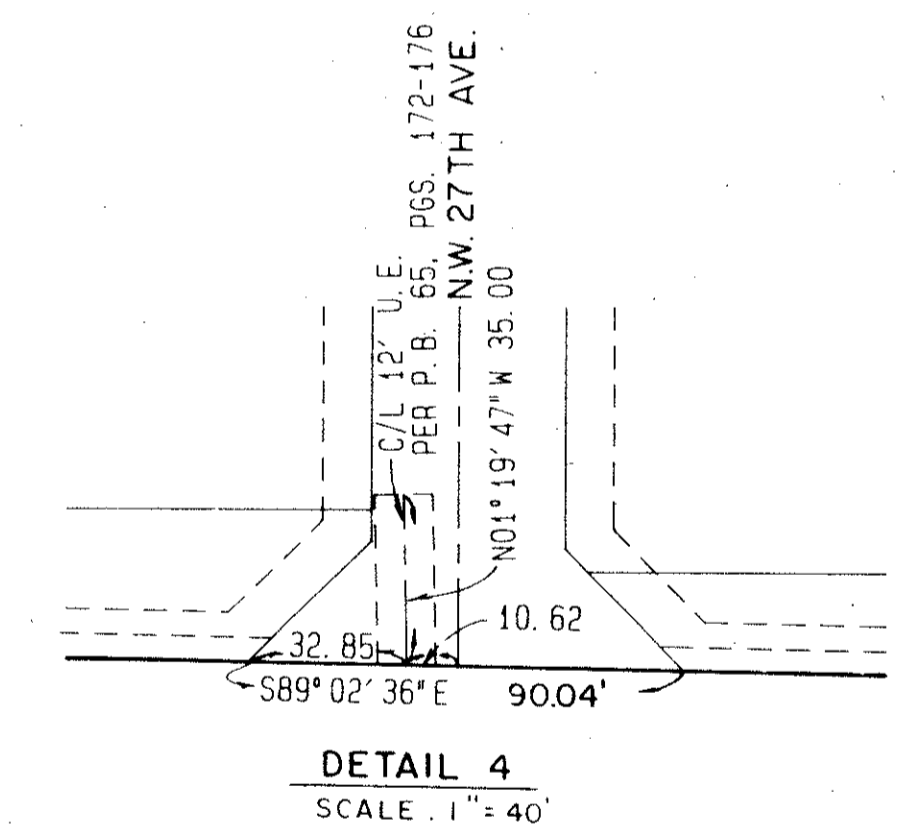
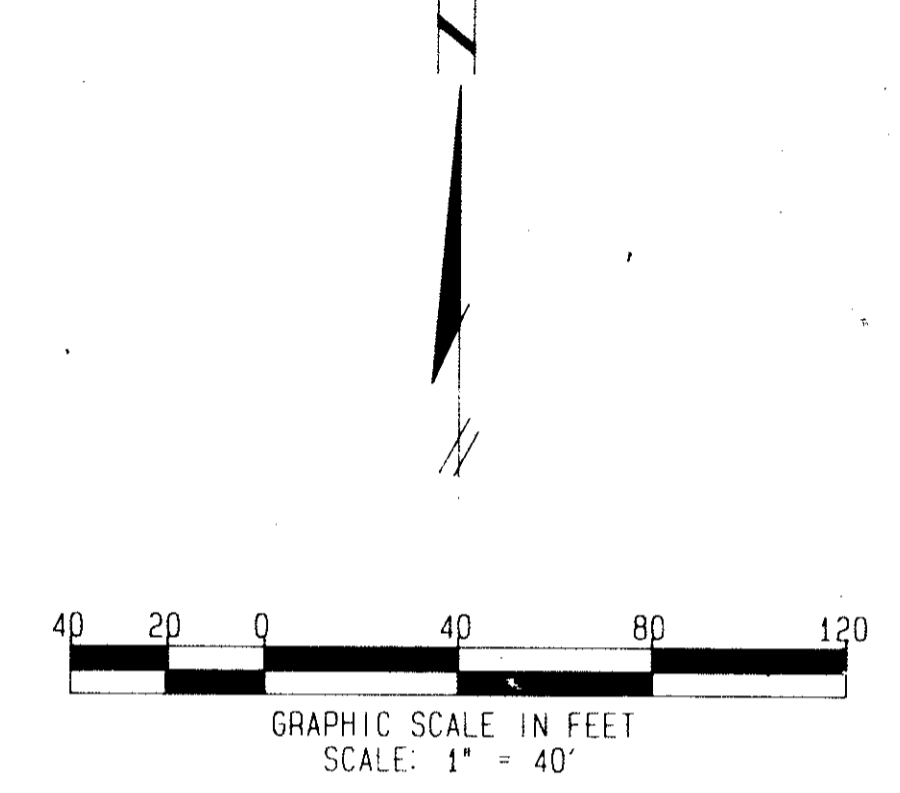
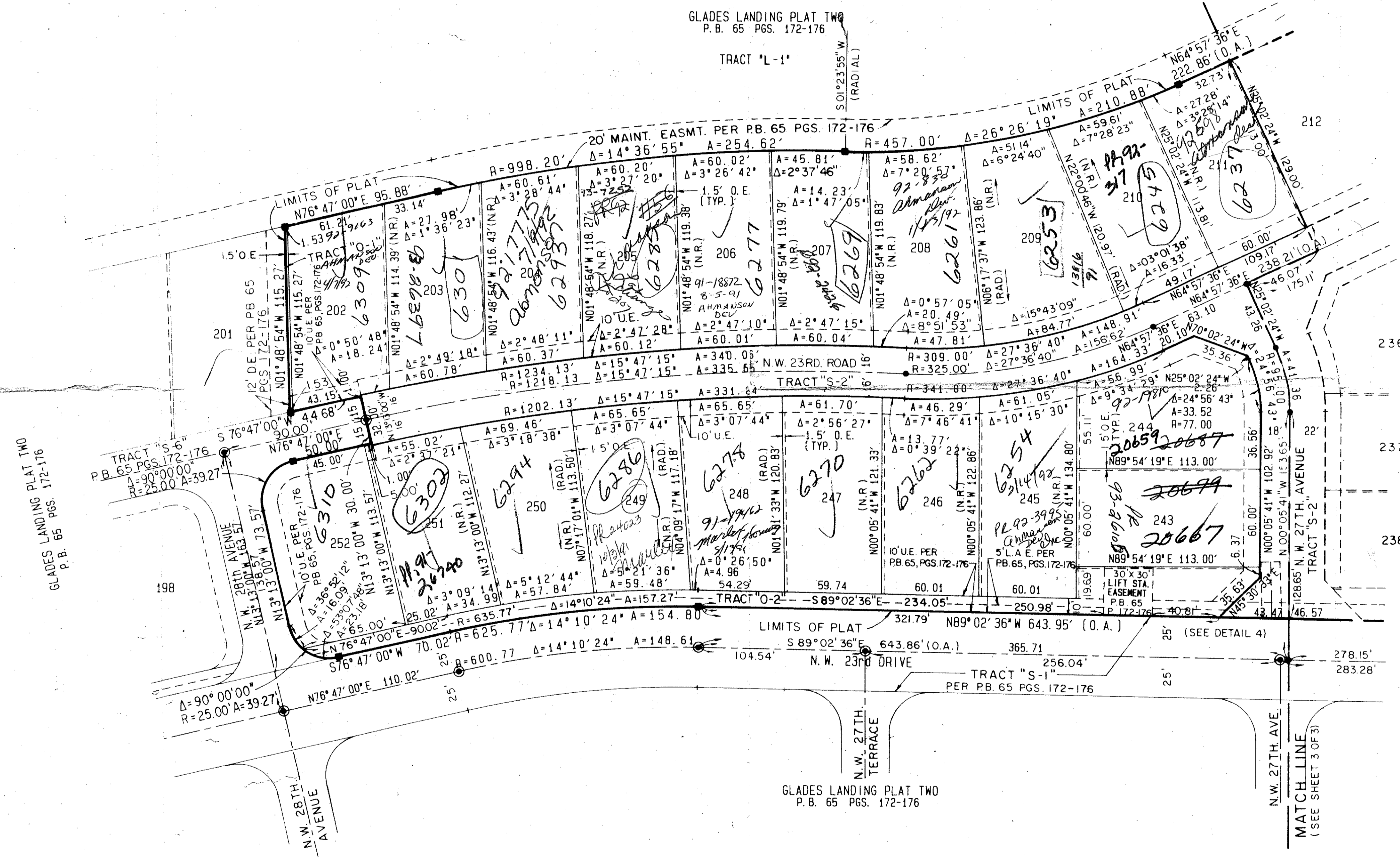
GLADES LANDING PLAT FOUR A PLANNED UNIT DEVELOPMENT

BEING A REPLAT OF TRACT "A-1" AND TRACT "B-3" OF GLADES LANDING PLAT TWO AS RECORDED IN PLAT BOOK 65, PAGES 172 - 176 OF THE PUBLIC RECORDS OF PALM BEACH COUNTY, FLORIDA, LYING IN SECTION 15, TOWNSHIP 47 SOUTH, RANGE 42 EAST FEBRUARY, 1991

SHEET 2 OF 3



SHEET INDEX
SCALE 1" = 300'



NOTE:
ADDITIONAL EASEMENTS FROM TRACT "A-1" OF PLAT BOOK 65 PAGES 3 AND 5 NOT SHOWN ON THIS PLAT HAVE BEEN ABANDONED PER OFFICIAL RECORDS BOOK 65 PGS. 193, PUBLIC RECORDS OF PALM BEACH COUNTY, FLORIDA.

TAL 608

BOOK 66
PAGE 2
FLOOD ZONE B
QUAD # 38
ZONE RS
SE 84-38
ZIP CODE 33434

0434-004
PET. 84-38

68/2

METRIC ENGINEERING INC.
ENGINEERS - PLANNERS - SURVEYORS
MIAMI - FORT LAUDERDALE
WEST PALM BEACH - PANAMA CITY

DESIGNED
D.L.G.
DRAWN
C.ADD
CHECKED
D.R.

PLAT FOUR
GLADES LANDING
SHEET 2 OF 3